

Chelmsford Hospital School



Prospectus

Ofsted rated outstanding March
2024

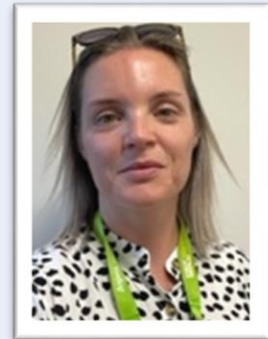
Aspris Children's Services

Overview

At Aspris Children's Services (formerly known as Priory Education and Children's Services), we believe that every young person is entitled to a positive future through a high level of care, support and education. With an unwavering focus on achieving the very best outcomes, we empower young people with a range of needs to fulfil their own unique potential. Our aim is to help young people to achieve their aspirations, no matter what challenges they may face.

Wherever a child's potential lies, we dedicate ourselves to being the difference that helps them to achieve their goals. Our educational expertise and first-class environments help children to develop their academic, social and independence skills, so they can realise their aspirations and potential. We have a network of Ofsted Outstanding and Good specialist schools and colleges across the UK, along with education services for young people with autism in the Middle East.

Welcome from the Head Teacher



Welcome to Chelmsford Hospital School!

We are an outstanding school providing education for young people 11-18 years during their admission at Priory Hospital Chelmsford.

Our experienced team provide an engaging and dynamic approach to teaching. They are able to offer bespoke learning pathways that enable all students to make progress during their admission.

Alongside our academic curriculum, we offer a programme of engagement and personal development activities. We work closely with the pupil, the parents or carers, the home school and medical professionals to ensure that we are providing an effective and relevant curriculum to support the student as fully as possible.

We are very proud of our school and the progress and achievements our students make socially and academically during their admission.

Meet the Team

| | |
|----------------|--|
| Clare Drury | Head Teacher Designated Safeguarding Lead |
| Emma Walsh | Senior Teacher English Lead ,Careers Lead & Exams Officer |
| Emma Harris | Teacher Maths Lead, Health and Wellbeing Lead |
| Paige Livings | Teaching Assistant Interventions Lead |
| Lyndsey Abbott | Sessional PE Teacher |
| Rocket | School Dog |

'Within a short space of time, pupils start to see themselves in a new light. This is because staff go the extra mile to make sure that pupils experience success'

Ofsted March 2024

School Aims and Ethos

Our intent is to enable every young person to develop the resilience and skills to become a lifelong learner. We strive to support the young person's re-engagement here and to help them make the transition to their chosen pathway in the community beyond our school.

Classroom Resources

Comprehensive library (fiction and non-fiction)

GCSE & A Level text books and resources

Classroom computers (Restricted access to internet)

Laptops

Ipads

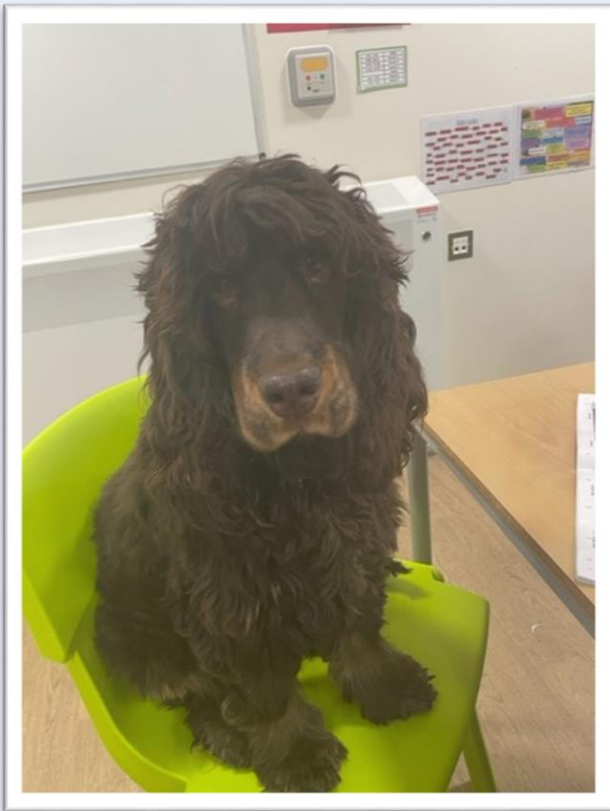
Kindle E-Readers

Art Materials

Puzzles and Games



Meet our School Dog



This is our school dog Rocket. He is a very friendly Cocker Spaniel who has been visiting our school since he was 4 months old. He belongs to Clare Drury, our Head Teacher and is on site a few days a week. Rocket enjoys interacting with the young people in school in the classroom and the garden. We offer opportunities for our students to complete AQA unit awards in different aspects of dog care and training.

Children can benefit educationally, emotionally, increase their understanding of responsibility and develop empathy and nurturing skills through contact with a dog. In addition to these benefits, children take great enjoyment from interaction with a dog. Whilst on site Rocket is supervised by school staff at all times and will not be taken near students who are nervous or scared around dogs.

Our Curriculum

Our own curriculum is delivered in combination with the home school curriculum. We are able to support and host examinations where needed. We also offer Accreditation awards in AQA units.

We have links with a local library and a regular visit from an independent careers advisor.

Throughout the year we are also very pleased to be offer opportunities for our students to run charity enterprise events.

| Key Stage 3 | Key Stage 4 | Post-16 |
|--|--|---|
| <ul style="list-style-type: none"> ❖ English ❖ Mathematics ❖ Science ❖ Creative and expressive Arts ❖ Humanities ❖ Health and Wellbeing ❖ Careers Education ❖ PE | <ul style="list-style-type: none"> ❖ English ❖ Mathematics ❖ Science ❖ Technology ❖ Humanities ❖ Health and Wellbeing ❖ Careers Education ❖ Creative and Expressive Arts ❖ PE | <ul style="list-style-type: none"> ❖ Health and Wellbeing ❖ Careers Education ❖ PE |

The School Day

Each day starts at 9am with morning meeting. This is followed by 3 sessions of education before lunch, with 2 short breaks in between. After lunch, the classroom is open for 1 session, and then the Therapy team begin their program.

Policy Documents

Aspris Children’s Services has a framework of education policies and procedures that guide our work with young people which are embedded into our daily practice. Our policies, which are available upon request, include:

| | | |
|-------------------------------|---------------------------------|---------------------------------|
| ❖ Safeguarding (AOP06) | ❖ Assessment (ACS30) | ❖ Behaviour (ACS04) |
| ❖ Countering Bullying (ACS03) | ❖ Health & Wellbeing (ACS17) | ❖ Exclusion (ACS37) |
| ❖ Equal Opportunities (ACS26) | ❖ Complaints (OP03) | ❖ Teaching and Learning (ACS32) |
| ❖ Accessibility (ACS27) | ❖ Relationships and Sex (ACS20) | ❖ SEN provision (ACS33) |
| ❖ SMSC (ACS34) | ❖ Health & Safety (AH&S01) | ❖ Curriculum (ACS31) |

Further Information

Examination Results 2022/2023

Results from 3 young people:

English Language – Grade 6-8

Maths – Grade 3 - 9

Science – Grade 4 - 9

Accreditation Results 2022/2023

| Number of Students | Number of Unit Awards |
|--------------------|-----------------------|
| 8 | 21 |

Number of complaints registered under formal procedure

We did not have any complaints during the last academic year

Pupil Premium Expenditure 2022/2023

We do not receive any pupil premium funding.

School Information

Headteacher: Clare Drury

claredrury@aspriscs.co.uk

Executive Headteacher: Scott Preston

ScottPreston@aspris.com

Chair of Governors: Scott Preston

Proprietor: Aspris Children's Services Ltd

Chair for the Proprietor: John Anderson, COO.

Contact Details

Chelmsford Hospital School

The Priory Hospital Chelmsford

Stump Lane

Springfield Green

Chelmsford

CM1 7SJ

Tel: 01245 244 746

***'Thankyou for building my
confidence and believing in me.
I have felt so supported and I've
learnt so much here***

Discharged Student 2024
