



The Ribble  
Autism School

Introducing our  
new specialist school  
in Lancashire

Coming soon



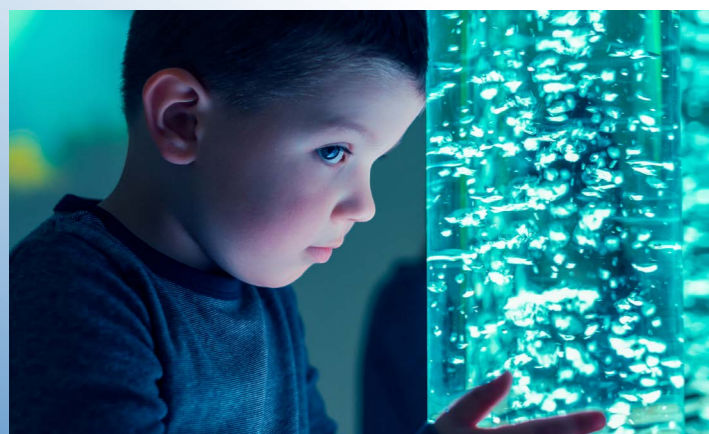
# Welcome to The Ribble Autism School

We are delighted to introduce you to The Ribble Autism School in Lockstock Hall, just south of Preston.

Opening in early 2024, The Ribble Autism School is a new independent specialist school for boys and girls aged 4 to 11 years who have severe autism and severe learning difficulties, including behaviours that challenge and/or associated anxiety.

## Our services

- A specialist, highly ambitious and varied curriculum, designed to ensure every pupil's needs are fully met
- Learning to be delivered in individual classrooms and/or group-learning environments
- Bespoke packages for pupils using tailored approaches from a range of interventions specifically designed for supporting and teaching people with autism
- A therapeutic learning environment
- Modern, well-equipped facilities and outdoor areas
- Opportunities that engage young people in appropriate learning so they can achieve outstanding progress relative to their starting points
- A dedicated and experienced staff team in supporting young people with autism
- Close links to other specialist and mainstream provisions
- A wide range of planned activities in the local community
- Support strategies for self-management of anxieties and independence
- Regular communication with parents, carers and Local Authorities



## Our vision

The Ribble Autism School is a specialist service and our understanding of autism will govern our practice, which in-turn informs our individualised programmes and how we break down barriers to learning. This ensures that all of our learners will make outstanding progress relative to their starting points.

The Ribble Autism School's vision statement is to: **'Raise standards in the education of young people with autism to enable them to lead meaningful, fulfilling and happy lives.'**

All young people will become successful and confident learners, who can demonstrate responsible citizenship in our school, within the wider community, and beyond. This is achieved by implementation of bespoke packages for pupils using tailored approaches from a range of interventions specifically designed for supporting and teaching people with autism.

## A dedicated staff team

The dedicated and experienced staff team in supporting young people with autism will include:

- A Headteacher
- Specialist Teacher
- Teaching Assistants
- Access to a specialist multidisciplinary team



## A specialist curriculum

Our curriculum will be highly ambitious, specialist and varied, designed to ensure that every pupil has access to a knowledge and skills-based curriculum, one which meets their individual needs and goes beyond, yet includes, the National Curriculum. The curriculum will also include the integration of SCERTS (Social Communication Emotional Regulation Transactional Support).

The curriculum will support pupils to develop knowledge and skills as appropriate to their age, ability and stage of development.

The starting points of pupils and their expected future destinations will be taken into consideration by the Teachers. Learners will be placed on a curriculum pathway, with each curriculum pathway linking to thoughtfully developed schemes of work for learners to have access to lessons which provide progressive learning opportunities. This enables them to acquire new skills and knowledge, whilst consolidating and embedding prior learning.

Within our curriculum we will have clearly defined goals. To learn skills for life and to build within our pupils' sufficient cultural capital to allow them to function with age, stage, ability appropriate independence within society, and to build firm foundations for their future lives.

## An environment designed to meet the pupils' needs

Pupils attending The Ribble Autism School will have complex needs. We will particularly excel in creating a safe space in which our pupils can thrive, re-engage with their education, and make outstanding progress in social communication and emotional resilience.

The classroom environments have been designed by our teaching team with specialist input from our multidisciplinary team to meet our pupils' special needs. This will include areas to support processing needs, the need for movement breaks, anxiety issues and social communication.

The pupils will have input into their own learning environment in order to help them to see school as a safe place, where their needs are seen and understood. Learning opportunities, activities and resources will vary considerably across each phase and between individuals. This is to ensure that all learning styles are fully met and that all our pupils are being challenged to grow and develop socially, emotionally and academically, with the delivery of an ambitious but supportive therapeutic curriculum.



## Part of one of the leading specialist education providers

We are proud to be part of Aspris Children's Services, one of the UK's leading specialist education providers. We form part of a network of schools and colleges sharing best practice and learning from each other's successes.

As part of Aspris Children's Services, we also have access to a wide variety of additional services across the UK. This enables pupils to make smooth transitions to associated colleges when they leave us.

We will benefit from a comprehensive and continually updated range of training, expert information and advice for educating and supporting children with autism. Our new school will be overseen by an Operations Director, Health and Safety Advisor, and Quality Lead, ensuring a consistent and robust approach of the highest standards.



## Contact us

For more information on our new school, please contact Lisa Sharrock, Head Teacher at The Ribble Autism School.

Call: 01257 220011

Email: [lisasharrock@aspriscs.co.uk](mailto:lisasharrock@aspriscs.co.uk)

**Aspris** Children's Services