

# Mission Statement

Aspris Children's  
Services

Talocher School  
Talocher Farm  
Wonastow Road  
Monmouth  
NP25 4DN



# Mission Statement

- Our purpose
- Our values
- Our ethos
- Our aims
- Our curriculum



# Our purpose

To inspire and motivate, enabling all to have appropriate foundations and adaptability to be successful in an ever changing world.

# Our values

Be safe  
Be healthy  
Be aspirational

## OUR ETHOS is our INTEGRITY

Our priority is the welfare, health and safety of our learners. This is achieved by providing a consistently safe, secure, caring and compassionate environment. Our relational model, positive behaviour support approach and therapeutic framework encourages learners to trust the adults around them, act responsibly, respectfully and independently. Our staff (Education Team) look to nurture, guide and provide positive educational opportunities that are child focused. This enables each individual to progress and flourish towards a positive future in a healthy, happy and enjoyable way.

# Our dims

The ways in which  
we deliver the  
values and  
ethos...

Our learners  
Our environment  
Our staff

# Our dims... continued

## Our Learners:

Full time, supervised education that is aspirational

Broad, balanced, inclusive and challenging curriculum that meets BESD/ASC difficulties

Make positive progress in behaviour, social independence and academic attainment

Enrichment, Technological & Vocational opportunities leading to positive outcomes

Acquire new knowledge, skills & understanding through creative & connected learning

Impact on day-to-day running of school through learner voice/school council

Accept challenges, cope and take responsibility for actions & transition to next steps

**Ambitious capable learners, Enterprising creative contributors, Healthy confident individuals, Ethical informed citizens**

## Our Staff:

Safer recruitment

Willing to go the extra mile

Person centred approach

Professional Standards for Teaching & Leadership (5 professional standards)

Entry to profession - QTS and induction

Qualified and/or High-Quality PL

Aware of Statutory Frameworks - KLS

Literacy, Numeracy & Digital Competence

## Our Environment:

Compliant to strict H&S requirements

Well maintained:

- Safe
- Warm
- Nurturing
- SEMH/ASC appropriate

On site vs. Local and Wider Communities

Readily accessible to meet individual needs

Supports the delivery of 6 AOLE's

# Our curriculum



Cynefin – the place where we feel we belong  
We want Talocher School to feel like this to the learners



# Foundations for success

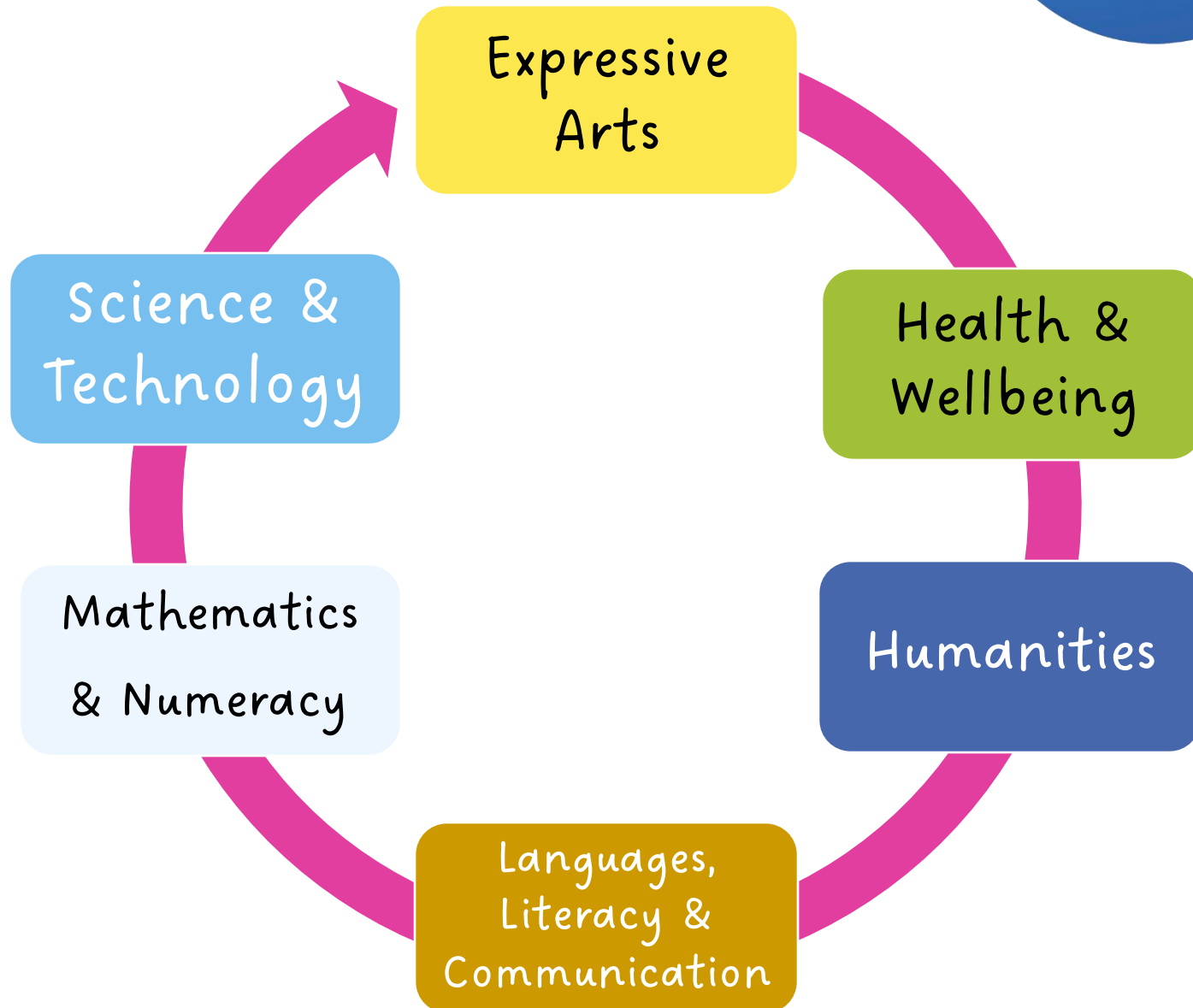


Literacy

Numeracy

Digital  
competence

# Areas of Learning Experience



# Curriculum Breadth



Expressive Arts	Health & Wellbeing	Humanities	Languages, Literacy & Communication	Mathematics & Numeracy	Science & Technology
Art Music* Drama Dance Digital Media*	Physical Health & Development Mental Health Emotional & Social Wellbeing Careers & Work-Related Experiences (CWRE) Mandatory H&S*	History Geography Religion, Values & Ethics (RVE) Social Studies Business Studies	<u>Literacy</u> English Literature Incidental Welsh Welsh Language Skills** Welsh Modern Foreign Languages International Languages	<u>Numeracy</u> Mathematics Conceptual Understanding Communication using Symbols Fluency Logical Reasoning Strategic Competence	Biology Chemistry Physics <u>Digital Competence</u> Computer Science* Design & Technology
Sgiliau*	TWIST (PSHE/RSE) Diversity Human Rights (RoC) CHiP	Local, National & International Contexts	Core**		Sgiliau*

# The four purposes

Ambitious,  
capable  
learners

Enterprising,  
creative  
contributors

Healthy,  
confident  
individuals

Ethical,  
informed  
citizens

# Curriculum Summary

“Ambitious,  
capable  
learners

“Healthy,  
confident  
individuals

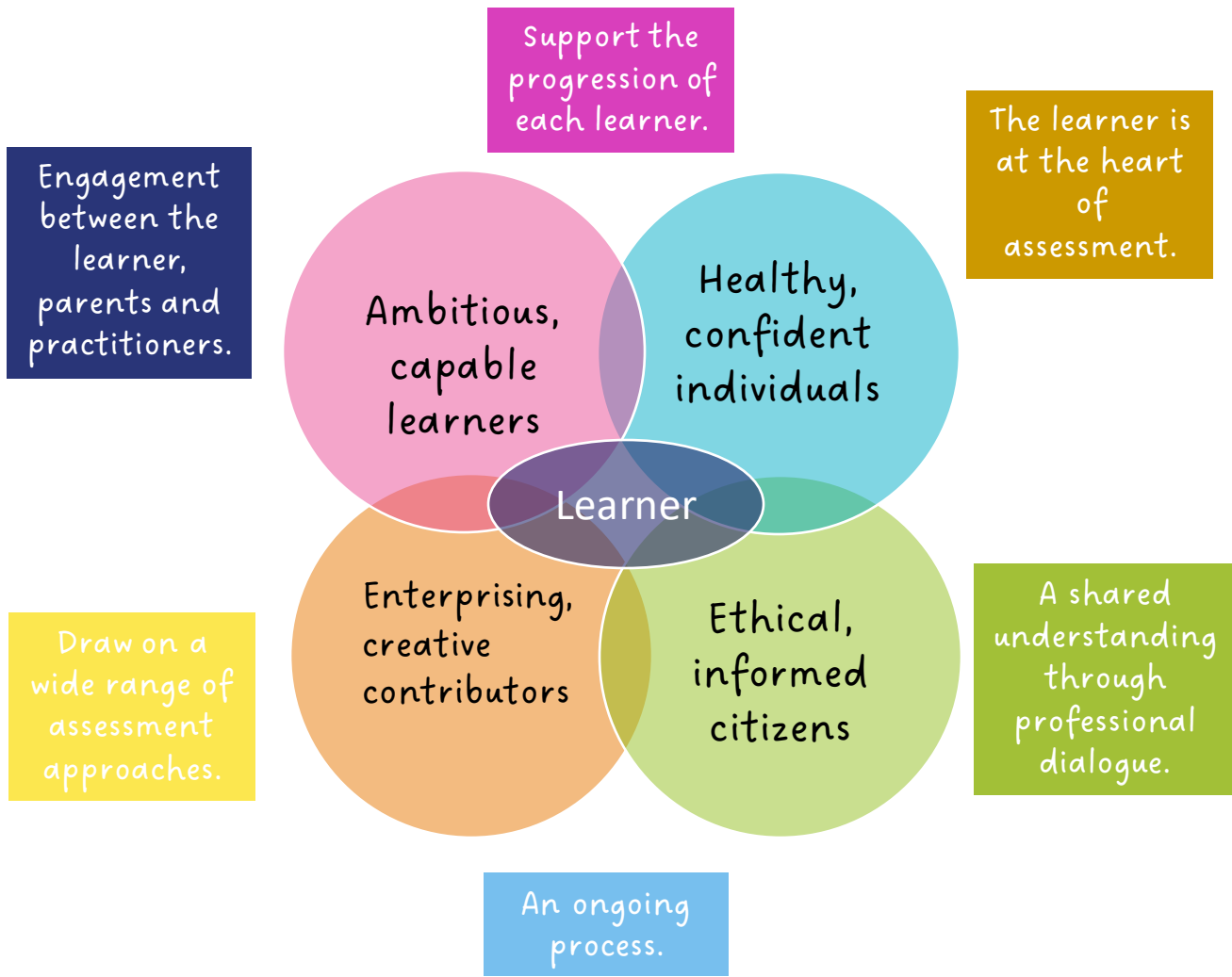


“Enterprising,  
creative  
contributors

“Ethical,  
informed  
citizens



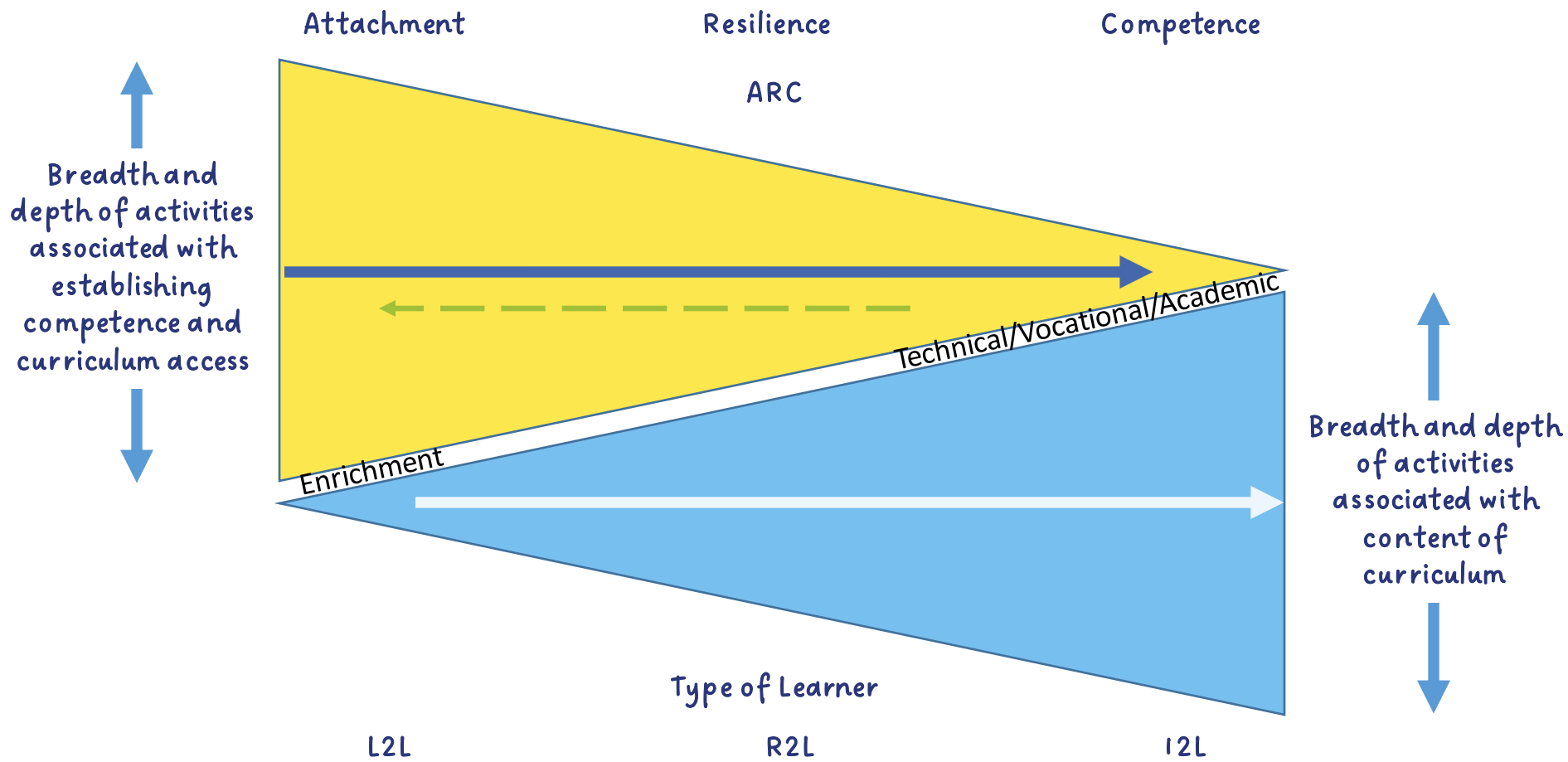
# Curriculum Assessment



# Therapeutic Framework

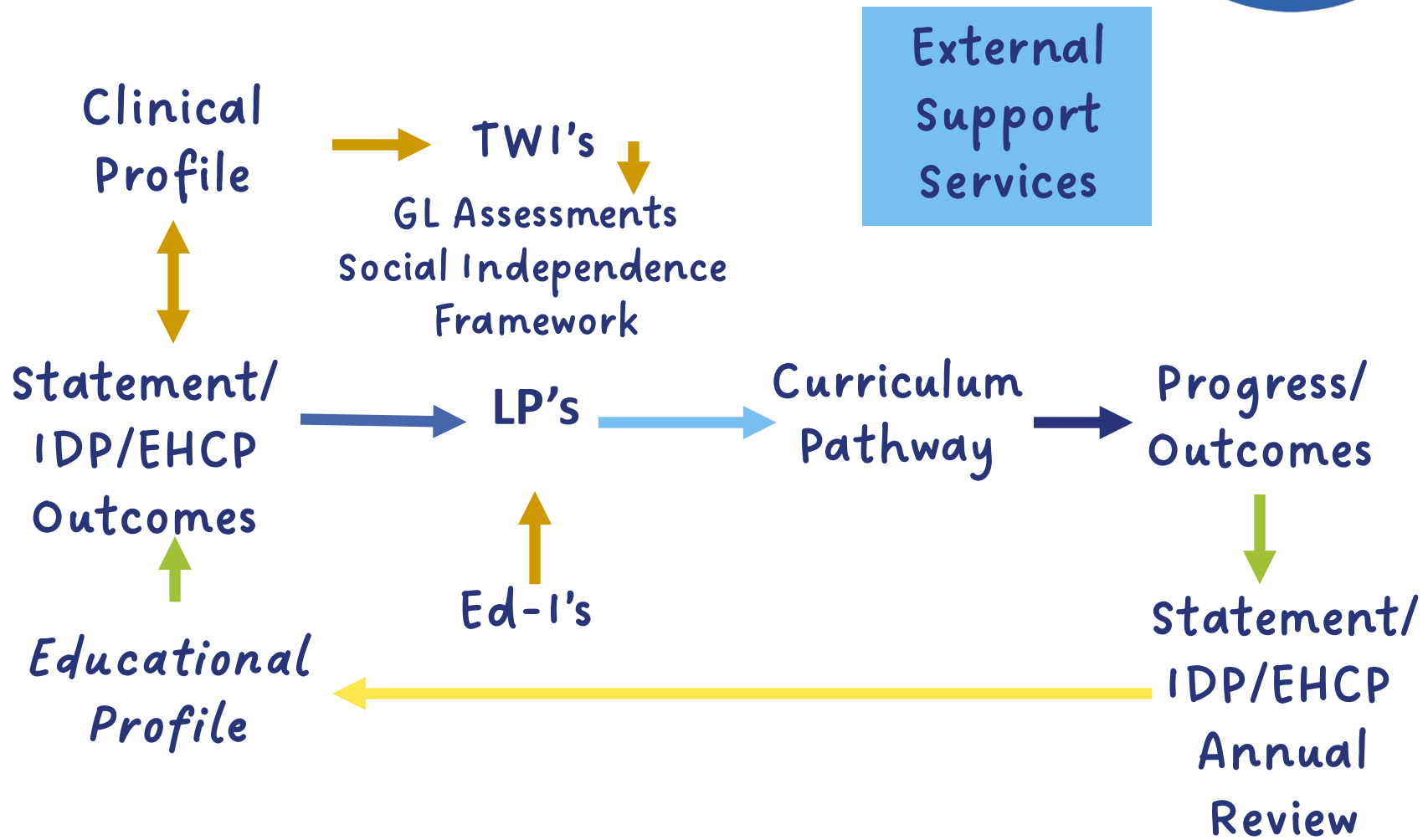


# ARC Pathway





# T-ARC Golden Thread



# Curriculum Vision/Summary

- Adopted and adapted the new Curriculum for Wales (Framework) to meet learner needs (this can be continually reviewed)
- Broad and balanced considering the age, abilities, aptitudes and ALN of learners
  - Learners breadth and depth of competency vs. breadth and depth of curriculum
- Mandatory obligations - 3 Foundations for Success, 6 AoLE's & 4 Purposes
  - RVE
  - Welsh
  - statements of what matters Code
  - progression Code
  - relationships and sexuality education Code
- Core Values and the National goal set out in well-being of future generations (Wales) Act 2015
- Willingness to learn groups, focusing on promoting mental and physical wellbeing
- Factors taken into account to not follow the Curriculum for Wales (Framework) in its entirety
- Our own unique identity 'Cynefin'

# Forward Planning

Workforce Development Plan

Professional Learning Program

Ongoing professional dialogue between practitioners

Local Leadership - Middle Leadership Layer

ALN/Professional Learning Library

Parental Support outside of School, Home Learning/Homework/My-On