



## Unsted Park School



# Unsted Park School and Sixth Form

Unsted Park School and Sixth Form is located in over 50 acres of beautiful private grounds in the tranquil town of Godalming, Surrey.

We provide specialist education and care to young people aged 7 to 20 years with high functioning autism, Asperger syndrome and associated disorders.



### Our specialist services

- A broad curriculum with highly individualised learning programmes in small classrooms
- The development of functional skills and national accredited qualifications are available
- Day or weekly (Sunday to Friday) residential placements available on-site within the school grounds
- A large and highly experienced in-house therapy team
- Excellent academic and transition outcomes
- Preparation for further/higher education and employment opportunities
- Modern and well-equipped facilities designed to meet young people's holistic needs
- A wide range of planned activities in the local community and as part of our forest school offering
- Support strategies for self-management of anxieties and independence
- Regular communication with parents, carers and Local Authorities



## A multidisciplinary team

Each student is allocated a form Tutor and a form Teaching Assistant. If the young person is a residential student they will also be allocated a Key Worker, who will be responsible for managing and implementing individual care plans and liaising with parents.

At Unsted Park, we employ a comprehensive and highly qualified multidisciplinary team including:

- **2 Speech and Language Therapists**
- **Occupational Therapist**
- **Art and Emotional Therapist**
- **Clinical Psychologist**
- **Dedicated Head of Pastoral Care**
- **A team of Therapy Support Assistants specialising in group and individual sessions**
- **Teachers and Teaching Assistants trained and experienced in supporting students with autism**
- **Care Support Workers (residential team)**

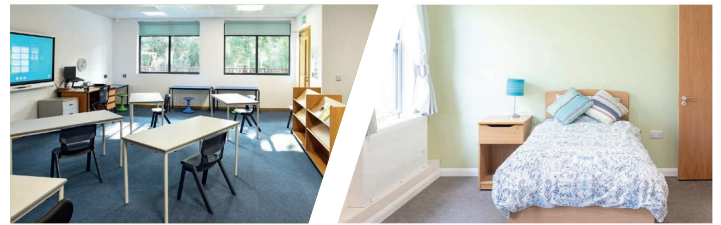
## A specialist curriculum

Located in over 50 acres of beautiful private grounds, our day and residential service is staffed 24 hours a day by our team of care staff, Support Workers and waking night staff.

For residential students, they will learn about independent living and have the opportunity to budget, to shop, cook for themselves, to clean their room and do their own laundry.

Our modern and fully-equipped facilities are designed to create a low stimulus sensory environment and includes:

- **Residential family groups including a lounge, dining room, kitchen and quiet area**
- **Canteen and dining area for daily meals**
- **Extensive private grounds**
- **Food technology classroom**
- **Music classroom**
- **IT rooms**
- **Large indoor heated swimming pool**
- **Occupation therapy gymnasium**
- **Primary playground**
- **Woodland activity/forest school area**
- **Low stimulus sensory room**
- **Science laboratories**
- **An on-site gym**



## A parent's story

"It was a battle to get David\* into Unsted Park eight years ago. I struggled to get him assessed, to get him the support he needed, and then following a successful Tribunal appearance, to get the County Council to agree that he could attend a school that could meet his complex needs. But it was a battle worth fighting.

From the moment David started at Unsted, all our lives changed for the better. I knew straight away it was the right environment for David, somewhere where he felt safe and supported. I cannot praise the school and its staff enough for the patience they have shown and the support they have given us over the years.

David has achieved so much more than I dared hope and has grown up into a wonderful young man - full of potential for the future, and Unsted have played a huge role in this."

**David's parent**



"As a mother, I am truly moved by the tremendous support provided to me."

Mother of a student

## Contact us

For more information on our specialist education and care services at Unsted Park School and Sixth Form, please contact us today.

**Call: 01483 892 061**

**Email: [placements@aspris.com](mailto:placements@aspris.com)**

**Website: [www.aspris.co.uk](http://www.aspris.co.uk)**

Unsted Park School and Sixth Form,  
Munstead Heath,  
Godalming, Surrey,  
GU7 1UW

**Aspris** Children's  
Services