



# Progress School

Progress School is a highly specialist school for up to 12 children and young people aged 6 to 19 years. It offers bespoke packages of support to meet the needs of young people with complex developmental disabilities, specialising in autism. Some young people who attend Progress School also live in one of two local children's homes which offer 38 or 52 week residential care.

All students at Progress School have an education, health and care plan and have often experienced difficulties in other mainstream schools or specialist provisions. Many of the students have had long periods of time out of school due to their complex and challenging support needs. At Progress School, we build a provision around the child which is designed specifically for them and is intended to meet their unique needs.

Located in Bamber Bridge, Preston, Progress School has excellent transport links and easy access to the M6, M61 and M65 motorways, making the school well-connected to a number of nearby towns, cities and seaside locations. This enables our students to learn and thrive in a range of community settings and to generalise skills learned in the school environment.

## A bespoke package of learning support

Progress School provides highly-specialised primary, secondary and post-16 educational support. Every element of the educational programme centres around the individual needs of the young people. This includes:

- **A range of structured teaching and learning approaches**
- **Learning delivered in individual classrooms and/or group-learning environments**
- **Individual timetables for each student, built around their interests**
- **Opportunities to learn in the community**
- **Learning through sensory activity and sensory regulation**
- **A range of communication support systems**
- **An optimally stimulating environment**







## A therapeutic learning environment

We are committed to supporting young people to communicate effectively and to regulate their emotions and sensory needs. We do this by using a range of therapeutic approaches which are at the heart of our provision.

Our in-house multidisciplinary team delivers services that are tailored to each young person's needs and are available in the school and residential environments.

The team comprises of:

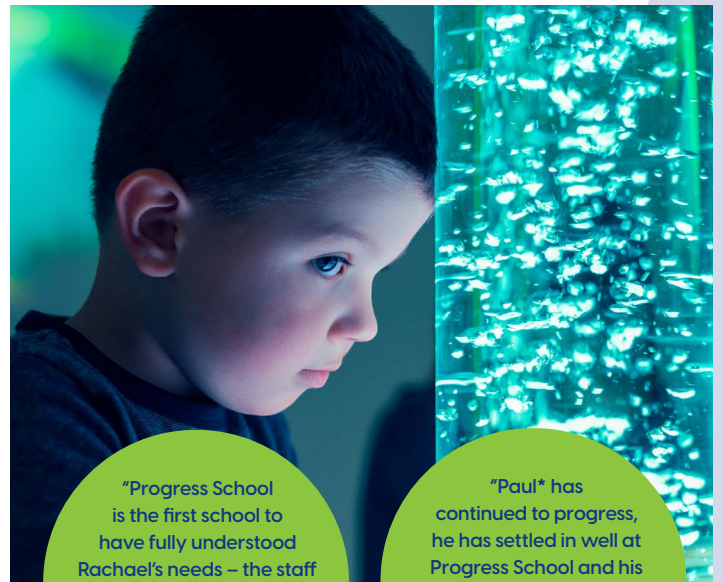
- Behaviour Analysts
- A Specialist Nurse
- Speech and Language Therapists
- Sensory Integration-trained – Occupational Therapists

## Continuity of care

Progress School has two children's homes offering residential accommodation for up to eight young people in total. The homes are registered with Ofsted to provide up to 52 weeks' care and are located 15 minutes from the main Progress School site.

Continuity is key to the high quality of care provided at Progress School, with staff working across both the residential and education settings. This innovative approach provides much needed familiarity and structure for the young person being looked after, as well as minimising transitions throughout the course of a typical school day.

In practice, this means that often the same staff member helps the young person with their morning care routine then takes them to school and continues to support them throughout all or some of the day, before taking them home again.



"Progress School is the first school to have fully understood Rachael's needs – the staff are amazing and have transformed her life."

Parent of a student

"Paul\* has continued to progress, he has settled in well at Progress School and his self-harming behaviour has decreased."

Social Worker of student



## Contact us

For information on our specialist education and care services, please contact us today.

**Call: 01772 334 832**

**Email: [placements@aspris.com](mailto:placements@aspris.com)**

**Website: [www.aspriscs.co.uk](http://www.aspriscs.co.uk)**

Progress School,  
Gough Lane,  
Bamber Bridge,  
Preston,  
PR5 6AQ

**Aspris** Children's  
Services