

Aspris College South Wales



Welcome to Aspris College South Wales

Welcome to Aspris College South Wales in Cwmbran, Torfaen. We are an independent and specialist co-educational college for young people aged 16 to 25 years with an autistic spectrum disorder, Asperger syndrome and associated conditions.

We provide a safe and supportive learning environment where our young people can receive education and develop strategies for managing their condition as part of their lives. We wish to enable our students to develop the confidence and skills they need for the next stage of their journey.

With our dedicated highly trained staff team, we aim to provide every young person with an individually tailored programme of study, with independent life skills and identified therapies included. This is to enable them to live as independently as possible and make their own life choices.

Our approach

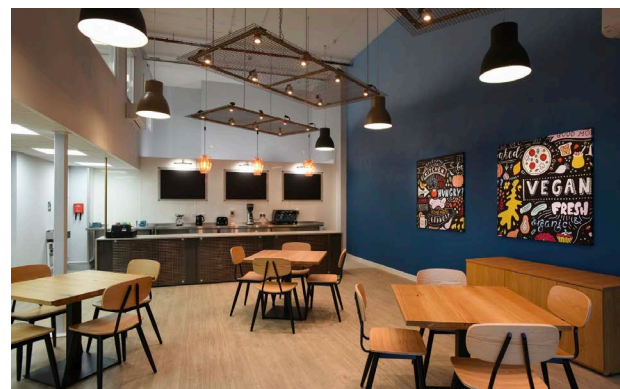
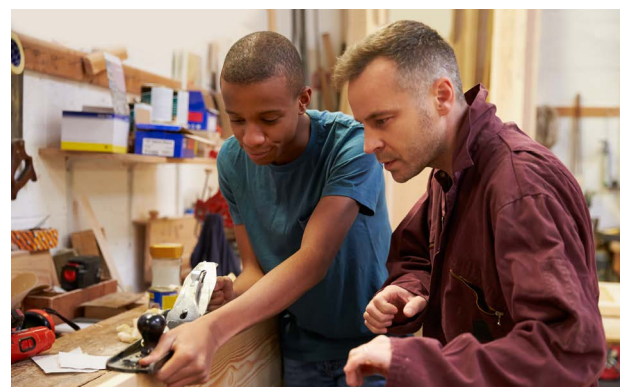
Our mission statement is simply: **“Be the best you can be”**.

The latest full inspection in 2017 for Aspris College South Wales was rated ‘Good’ by Estyn, with our latest monitoring visit in 2019 stating:

- The college provides a calm, welcoming environment that enables learners to feel safe and secure. This contributes to the very high levels of attendance
- The college provides all learners with high levels of support and guidance that is based on a sound understanding of learner needs. This helps learners to make suitable progress and where appropriate, to achieve their qualification aims
- Learners are able to access a curriculum that includes studying for nationally recognised qualifications, alongside their mainstream peers, and in-house provision that is generally well suited to individual needs. This helps develop learners’ confidence and independence skills
- Leaders have a secure understanding of the strengths and areas for improvement at the college. These are based on a strong commitment to improving opportunities and outcomes for all learners

We welcome visitors to Aspris College South Wales. Please do not hesitate to contact me if you would like to arrange a visit.

Kath Lawler
College Manager
Aspris College South Wales



Service summary

- A brand new campus with modern facilities
- Access to FE courses with extra support
- A dedicated and experienced staff team
- A partnership in place with Coleg Gwent
- Excellent academic outcomes
- Bespoke learning packages in social, independent and work-based learning
- Effective therapeutic input that helps students to become more emotionally resilient, improving their behaviour and helping their readiness for learning
- A positive environment and college culture that promotes equality

Introducing our new campus

Our new college location is a purpose-built facility, located in the centre of Cwmbran with excellent transport links. It is also the base for the college’s in-house programmes of support.

We are a short walk to Torfaen Learning Zone, one of the many Coleg Gwent campuses situated around the region. We have an excellent partnership with Coleg Gwent should our learners wish to attend a mainstream college but require our specialist support and therapeutic input.

The modern and spacious facilities at our new campus in Cwmbran include:

- Classrooms
- IT facilities
- Therapy room
- Common room
- Learning kitchen
- Dining room
- Art room
- Student run café called Café-Yr-Hwb



“Aspris College South Wales is an absolutely fantastic college. The team always make you feel welcome and nothing is too much trouble. My son’s Support Worker is totally the best. She is so on my son’s level and I never worry when he is with her. I’m completely happy! Happy son means a happy mum.”

Parent of a student at Aspris College South Wales

“Aspris College South Wales has friendly and dedicated staff. It’s a positive learning environment for young people with autism. To see my child thrive, enjoy learning and to see him happy is all I can ask.”

Parent of a student at Aspris College South Wales



Education services

With a dedicated and passionate staff team, we aim to provide every young person with an individually tailored programme of education accredited by either BTEC and Agored Cymru (Open College), care, work experience, leisure and life skills, whilst pursuing their own personalised transition pathway.

Our students receive training within the community to enable them to live as independently as possible and make their own life choices. Transition planning to and from our college is vital and students are assigned a Key Worker.

All staff employed at Aspris College South Wales are highly trained and have access to ongoing CPD in areas such as:

- **Managing behaviours that challenge**
- **Autism and Asperger syndrome**
- **Safeguarding children and adults**

A safe and supportive environment

Aspris College South Wales provides a safe and supportive environment with specialist facilities for therapy and support.

Within this environment students are encouraged to:

- **Explore their own experience of autism and Asperger syndrome, developing strategies for managing their condition as part of their lives**
- **Work towards and increase their independent living skills**
- **Appreciate and celebrate the value of the diversity that they bring to the college community and to society**
- **Develop strategies for clear communication so that staff and other students have a better understanding of their complexities**
- **Make informed choices regarding their lifestyle**

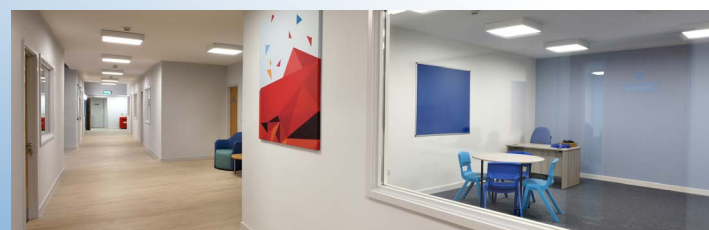
At the end of the study programme at Aspris College South Wales, students will have increased their potential and be better prepared to move on to the next step in their independence pathway, be that in higher education, employment, supported accommodation or independent living within the community.



Curriculum information

The philosophy of Aspris College South Wales is based upon providing as many learning opportunities as possible to allow choice, equality and diversity. Our young people are also able to benefit from successful partnership agreements with local colleges and have access to over 150 academic and vocational courses, including A-Levels and GCSEs.

Our approach is based upon individual opportunities and we aim to meet individual needs through tailored programmes of education and care. Additional support for literacy, numeracy and independent living skills can be provided where required. Work based learning, work experience and employability skills are embedded into the study programmes to help with transition and preparation for further study or employment.



"Aspris College South Wales has an excellent understanding of my son's autism and anxiety, and what his needs are."

Parent of a student at Aspris College South Wales



"Supporting people with autism needs staff who have a positive attitude, to show how much they can achieve as individuals. Aspris College South Wales has this attitude and staff support young people to help them learn, make friends and become more independent."

Parent of a student at Aspris College South Wales



Therapeutic support

Therapy can be an important part of the learning experience for young people with autism and Asperger syndrome. All students are offered personalised social skills profiles and are encouraged to achieve the goals they set in therapy.

A combination of evidence-based therapies will be provided to help students, if it is assessed as necessary as part of their ongoing development.

"I would like to take this opportunity to say how much I appreciate what everyone does to try and help my son during his time at college. He has amazing support from you all. Thank you so much."

Parent of a student at Aspris College South Wales



Occupational therapy

Occupational therapy (OT) focuses on supporting a person's wellbeing through participation in meaningful activity. An Occupational Therapist will work with our learners to enable them to do the things that are important or meaningful to them.

An Occupational Therapist can help identify how a person is responding to various sensory input (things one sees, hears, touches, smells or tastes). Sometimes sensory processing issues can cause a person to feel overwhelmed or anxious, and Occupational Therapists can develop personalised strategies to help with this.

Examples of activities an Occupational Therapist can help the student with include:

- Budgeting
- Leisure and social activities
- Mental health support, including mindfulness, confidence building and relaxation
- Productivity, including organisational skills
- Self-care
- Study support



Speech and language therapy

Our Speech and Language Therapist takes a consultative role, as well as working directly with students to assess their needs, plan and implement intervention.

Many of the students have a varied communicative profile, often presenting as very able verbally, but failing to detect and/or understand more subtle verbal and non-verbal cues.

Students have access to individual sessions but development focus is on group sessions, where a higher level of communicative competence and a more reflective stance of real-life situations is supported.

This integrated programme of therapy promotes a consistent approach to social communication and helps students to raise awareness of their individual difficulties, the effect on others and provides clear information and useful strategies for communication in adulthood.



Case study – Catherine's story

I was diagnosed with autism at the age of five and arrived at Aspris College South Wales three years ago after leaving school.

The first time I heard about Aspris College South Wales was after attending a presentation about the college and the services that they offered, working in partnership with Coleg Gwent.

I left school as my Education and Health Care Plan only covered me up to Year 10, and therefore in the Sixth Form there wouldn't have been support for me. Both myself and my parents were concerned that without that support, I would not have coped with the demands of doing my A-Levels.

It became clear that Aspris College South Wales would give me the support that I needed to help me to achieve my goals.



How has Aspris College South Wales helped me?

In my three years at Aspris College South Wales, I've had two Support Assistants, who from day one have really helped me to develop and have always been there for me.

They interpreted what I needed to do, improved my art skills and guided me on a social level with other students. This helped me to build friendships with other learners at the college.

I've also always had a fear of knives and heat so as part of my ILS training, I did a lot more cooking. I now feel a lot more confident and can produce a simple meal on my own.



Achieving positive outcomes

Three years on and I've now attained merit-merit-merit, which is equal to three A-Levels and have qualified for a BA in Performing Arts for a Theatre and Film University course.

I sincerely believe that without the help of Aspris, I wouldn't be going to University to follow my dream in the drama world. I have built my confidence up so much, that on two occasions I've taken an active part in our local Autism Awareness Day. I was even on stage last year answering questions, running the quiz and this year gave a talk with a Powerpoint presentation and again ran the quiz.

I have loved my time at Aspris College South Wales and I know that I will miss it very much. I do however plan to call in whenever I can and keep in touch.

I would like to thank the college once again for everything you have done for me.



"Aspris College South Wales is an excellent facility for children like my daughter Catherine*. We have been so lucky that she was able to go there, and grow her educational and social skills over the last three years."

Parent of Catherine

Get in touch

For information on our specialist services at Aspris College South Wales, please do not hesitate to contact us.

Call: 01495 762 609

Email: placements@aspris.com

Website: www.aspriscs.co.uk

Aspris College South Wales,
Leisure at Cwmbran,
82 Glyndwr Road,
Cwmbran,
Torfaen,
NP44 1QS

