



Coming soon

Fromefield Manor
School

Introducing our new specialist school in Frome



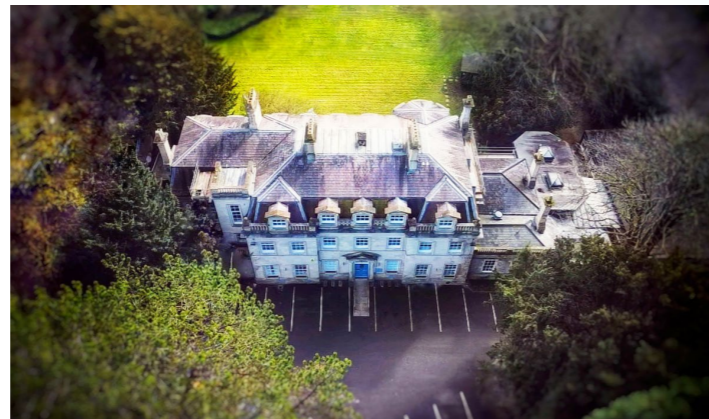
Welcome to Fromefield Manor School

We are delighted to introduce you to Fromefield Manor School in Frome, Somerset.

Situated in a central town location, Fromefield Manor School will provide specialist education services to support young people aged 11 to 19 years with autism and associated complex needs.

Our specialist services

- A tailored and person-centred approach to our curriculum model to support a wide range of pupils needs and abilities
- Highly individualised learning programmes in small classrooms
- The development of functional skills and national accredited qualifications are available
- Access to a dedicated and experienced fully integrated therapy team
- Modern and well-equipped facilities, including an independence training kitchen, art room, science room, a dedicated sixth form provision, performing arts space, sensory room and café zone
- Access to outdoor environments and a local off-site forest school provision
- Preparation for further/higher education and employment opportunities
- A wide range of planned activities in the local community
- Support strategies for self-management of anxieties and independence
- Regular communication with parents, carers and Local Authorities
- A central town location ideal for further developing independence skills



Personalised education and therapeutic support

Fromefield Manor School will deliver specialised and highly individualised education and support, that transforms the lives of our young people and their families. Our extensively experienced staff team will work with passion and dedication to empower young people to become successful learners, responsible citizens and confident individuals.

We will continuously review our skillfully tailored education and therapeutic support, to ensure we meet each individual's developing needs and guide students to develop the educational, social and life skills for a happy and fulfilling future.

We place a strong emphasis on social and emotional learning, which together with holistic therapy integrated into daily teaching, will see students grow as people and build confidence and resilience.

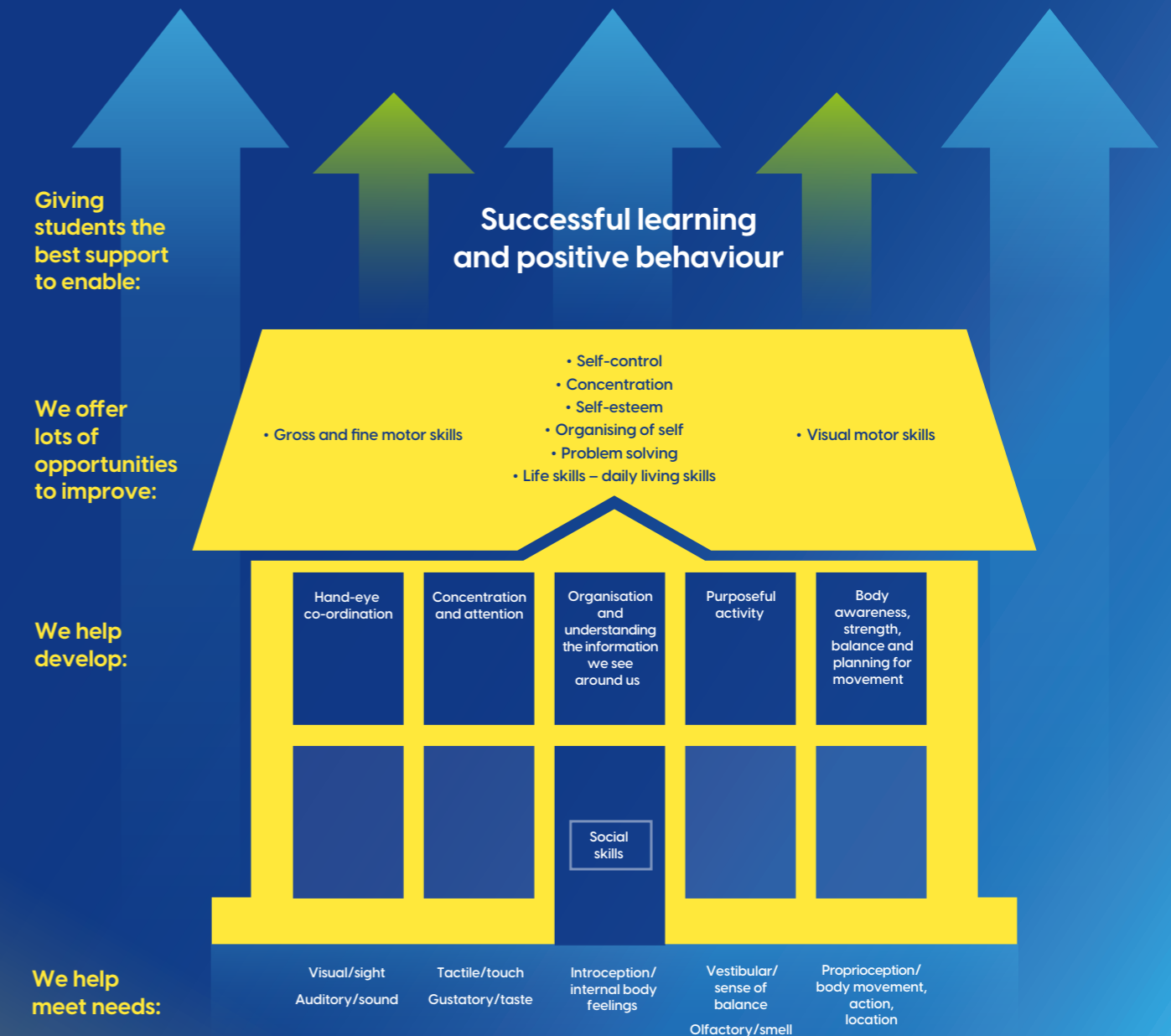
Everything we do at Fromefield Manor School will be person-centred and flexible to ensure we are always adapting our offering to meet the changing needs of our students.



Our vision

At Fromefield Manor School, we will provide a flexible person-centred approach to ensure we meet the individual needs of each of our students. Everything we deliver and offer will also be underpinned by our house progression model – please see below.

This vision consists of meeting the sensory needs/communication difficulties of a young person with autism, before moving up from the foundations to develop a range of skills and behaviours, including hand-eye coordination, concentration and attention. Once those are more embedded, we will offer a range of opportunities to further improve these skills and behaviours to give students the best support to enable successful learning and positive behaviour.



Introducing our new Head Teacher – Gemma Drury

With over 20 years of experience spanning both primary and secondary education, Gemma is an inspiring leader who has made significant contributions in both mainstream and specialist settings. Her professional journey has been diverse, encompassing roles such as Class Teacher, ALNCo, Leadership, Local Authority Advisory, and Head of specialist settings.

In her most recent position as an Education and ALN (SEND) Consultant, Gemma's passion lies in supporting schools, Local Authorities and professionals. She was committed to developing and facilitating excellent provision for all learners, whilst also assisting schools in meeting the requirements of ALN Reform within Wales. Her expertise has been recognized as sector-leading, as highlighted in the Estyn Good Practice document.

Gemma holds a range of qualifications, including Early Bird Plus, Healthy Minds and Step Back Trainer. Her specialised knowledge is in the areas of autism and SEMH (social, emotional, and mental health) needs. Additionally, she possesses a Diploma in Trauma-Informed Schools (TIS). Gemma's extensive experience also includes delivering tailored training programs and leading several Welsh Government and University pilots related to ALN (SEND).

As Gemma commences the role of Head Teacher at Fromefield Manor School, she is driven by a strong desire to create an environment where all learners can access exceptional bespoke support and enriching experiences throughout their individual learning journeys.



Part of one of the leading specialist education providers

We are proud to be part of Aspris Children's Services, one of the UK's leading specialist education providers. We form part of a network of schools sharing best practice and learning from each other's successes, including Newbury Manor School which is our partner school based nearby in Newbury.

As part of Aspris Children's Services, we also have access to a wide variety of additional services across the UK. This enables students to make smooth transitions to associated colleges when they leave us. We benefit from a comprehensive and continually updated range of training, expert information and advice for educating and supporting children with autism. Our new school will be overseen by an Operations Director, Health and Safety Advisor and Quality Lead, ensuring a consistent and robust approach of the highest standards.



Contact us

For more information on Fromefield Manor School, please contact Judith Blackwell, Regional Referral Co-ordinator for Devon and Somerset at Aspris Children's Services.

Call: 07518 298184

Email: judithblackwell@aspriscs.co.uk

Fromefield Manor School, North Parade, 16 Welshmill Road, Frome, BA11 2AB

Aspris Children's Services